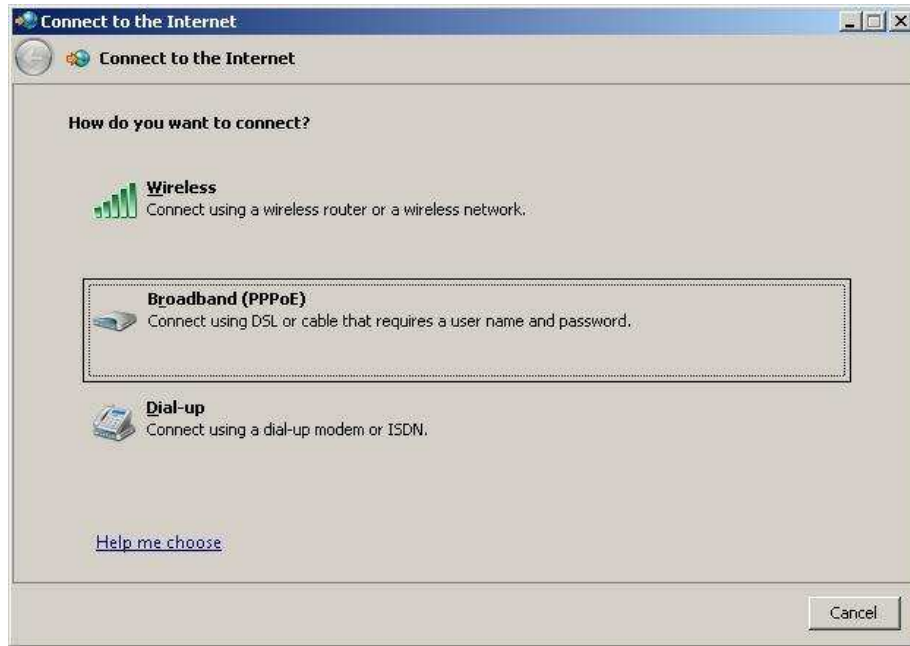
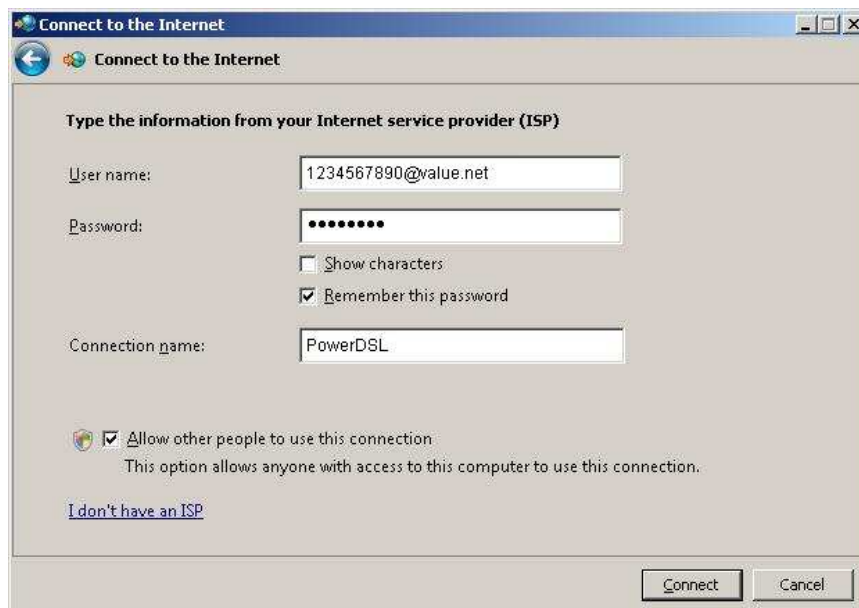


Windows Vista PPPoE Connection Setup For DSL connection to a single PC without a router

1. Begin by opening the Windows Vista Control Panel. Click the **Start** orb, then select **Control Panel**.
2. Click on the link labeled **Connect to the Internet**. The following dialog box should pop up:



3. Choose the option for **Broadband (PPPoE)**. The following dialog box should appear:



4. The wizard will now require you to enter a username and password. Enter the 10-digit phone number your DSL service is active on in the **User name** field. You must add the @value.net domain to the username here. For example: a valid username would be “1234567890@value.net” if your DSL active phone number is (123) 456-7890. Enter the password you selected when you signed up for your account in the **Password** field. Select “Remember this password.” In the **Connection name** box, enter PowerDSL. You must now also decide who will be able to use the connection by either checking or not checking the **Allow other people to use this connection** box. This check box is usually checked.
5. Click the **Connect** button and Vista will verify the connection. After it has finished this process, click the close button.
6. To utilize this connection, click the **Start** orb, select **Connect To** and select the connection labeled PowerDSL.